

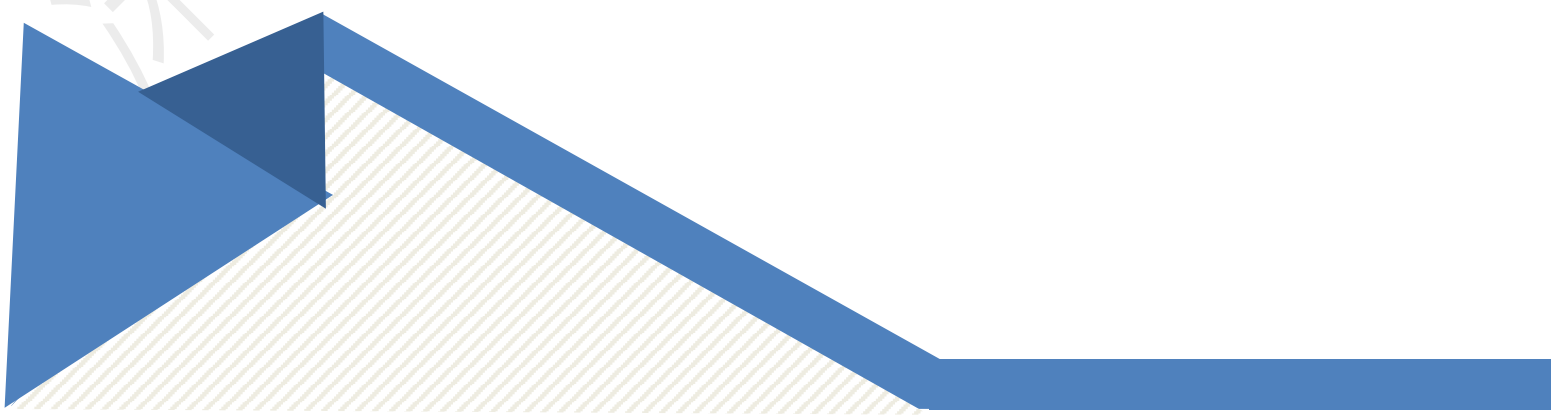


DX-BT24-M&BT24-T

SERIAL UART APPLICATION GUIDE

Version : 2.2

Date: 2022-01-06





Update record

Version	Date	Illustrate	Author
V2.1	2018/10/1	initial version	DL
V2.2	2022/01/06	new version	DL

Contact Us

Shenzhen DX-SMART Technology Co., Ltd.

Email : sales@szdx-smart.com

Tel : 0755-29978125

Web : www.szdx-smart.com

Add : Room 601, Block A1, Huafeng Zhigu, Hangkong Road, Baoan District, Shenzhen



Contents

1. Introduction.....	5 -
1.1. Serial Port Basic Parameters	5 -
1.2. AT Command And Transparent Transmission Mode	5 -
1.3. Module Data Throughput.....	5 -
2. Mobile Phone Testing APP And PC-side Tools	6 -
2.1. Android Test APP	6 -
2.2. Apple Test App	7 -
2.3. Computer Test Software	8 -
3. Serial Port Usage.....	8 -
3.1. Use Serial Port To Read And Write AT Commands	8 -
3.1.1. Module Test Minimal System.....	8 -
3.1.2. The Process Of Reading And Writing AT Commands On The Computer	10 -
3.1.3. MCU Read And Write AT Command Process.....	11 -
3.2. Use Serial Communication	12 -
3.2.1. Use The PC To Communicate With The Module.....	12 -
3.2.2. Communicate With The Module Using The Mobile Terminal.....	12 -
3.2.3. Communicate With The Module Using Master Bluetooth.....	13 -
4. Detailed Explanation Of Related AT Commands.....	14 -
4.1. Command Format Description.....	14 -
4.2. Indication Format.....	14 -
4.3. Examples Of AT Commands.....	15 -
5. AT Command	15 -
5.1. Basic Commands.....	15 -
5.1.1. Test Command	15 -
5.1.2. Read Firmware Version	15 -
5.1.3. Read MAC Address.....	15 -
5.1.4. Read/Write Local Name.....	16 -
5.1.5. Query—Serial-port Stop Bit.....	16 -
5.1.6. Query—Serial-port Parity Bit.....	16 -
5.1.7. Query—UART Baudrate	17 -
5.1.8. Set/Query—Software Flow Control	17 -
5.1.9. Set/Query—Transparent Transmission Mode	17 -
5.1.10. Disconnect Bluetooth.....	18 -
5.1.11. Software Reset	18 -
5.2. Broadcast Packet Instruction	18 -
5.2.1. Query—SERVICE UUID	18 -
5.2.2. Query—NOTIFY UUID\WRITE UUID	19 -
5.2.3. Query—WRITE UUID.....	19 -



5.2.4. Modify The 28-byte Content In The Broadcast Packet	- 19 -
5.2.5. Modify The 7-byte Content In The Broadcast Packet.....	- 20 -
5.3. Safety Control Instructions.....	- 21 -
5.3.1. Set/Query—Open Private Cryptographic Protocol	- 21 -
5.3.2. Query—Private Password.....	- 22 -
5.3.3. Set/Query—Add Whitelist.....	- 22 -
5.3.4. Set/Query—Automatically Add Whitelist	- 23 -
5.3.5. Set/Query—Clear Whitelist.....	- 23 -
5.4. Connect Instruction.....	- 24 -
5.4.1. Set/Query—Notify The Upper Computer Connection Status	- 24 -
5.4.2. Set/Query—Whether The Module Can Be Connected.....	- 24 -
5.5. Power consumption instruction.....	- 25 -
5.5.1. Set/Query—Energy Saving Mode	- 25 -
5.5.2. Set/Query—Whether To Turn Off The Broadcast.....	- 25 -
5.6. Pairing Mode.....	- 25 -
5.6.1. Set/Query—Enter Pairing Mode.....	- 25 -
5.7. List Of Error Codes.....	- 26 -
6. Value-added Services	- 27 -

Picture index

Figure 1 : Android APP interface.....	- 7 -
Figure 2 : Apple mobile APP interface diagram.....	- 7 -
Figure 3 : Computer serial port software diagram	- 8 -
Figure 4 : Module minimum system diagram.....	- 9 -
Figure 5 : Demonstration diagram of computer serial port	- 10 -
Figure 6 : Read and write AT command logic reference diagram	- 11 -
Figure 7 : Module communication flow chart	- 13 -
Figure 8 : Master-slave module communication flow chart.....	- 13 -



1. Introduction

DX-SMART Technology DX-BT24-M&BT24-T Bluetooth module has 5.1 Bluetooth protocol, and the module has built-in standard serial port protocol. Data can be exchanged with the mobile terminal, PC terminal, and main device terminal through the module serial port, and the module parameters can be configured and modified using AT commands. Thereby, the device can join the Internet of Things at a very low cost and at a very fast speed, making the device more convenient and intelligent.

1.1. Serial Port Basic Parameters

- Module serial port default parameters : 9600bps/8/n/1 (Baud/Data /No Parity/Stop Bits)
- Module supports software flow control
- Module BLE UUID : SERVICE UUID : FFE0
NOTIFY/WRITE UUID : FFE1
WRITE UUID : FFE2

1.2. AT Command And Transparent Transmission Mode

- AT command mode : When the module is not connected by other devices, it is in command mode and can respond to commands.
- Transparent Transmission Mode : After other devices are connected to the module, they are in transparent transmission mode, and data transmission can be started at this time.

1.3. Module Data Throughput

Data throughput			
Android ->Module-> UART		UART ->Module -> Android	
Baud	115200	Baud	115200
connection	15	connection	15

interval(ms)		interval(ms)	
APP data package(bytes)	230	UART packet(bytes)	320
send interval(ms)	20	send interval(ms)	20
Throughput(bytes/s)	10120	Throughput(bytes/s)	10626
Characteristic	Write without Response	Characteristic	Notify
iPhone -> Module-> UART		UART -> Module-> iPhone	
Baud	115200	Baud	115200
connection interval(ms)	30	connection interval(ms)	30
APP data package(bytes)	140	UART packet(bytes)	300
send interval(ms)	20	send interval(ms)	20
Throughput(bytes/s)	5600	Throughput(bytes/s)	9536
Characteristic	Write without Response	Characteristic	Notify

Remark

The data in the above table is for reference only. The maximum MTU value supported by this module is 253. The data throughput is related to the MTU value of the mobile phone's Bluetooth and the connection interval. The actual data shall prevail.

2. Mobile Phone Testing APP And PC-side Tools

2.1. Android Test APP

Install the Android test APP in the data package to the Android phone, open the transparent transmission interface to search and connect, and connect the module to perform data transmission. The APP interface is as follows:



Figure 1 : Android APP interface

2.2. Apple Test App

Apple Test APP Download 'DX-SMART' in the Apple Store, and use this APP to test the data transmission. The APP interface is as follows:



Figure 2 : Apple mobile APP interface diagram



2.3. Computer Test Software

Please download and install the sscom5.13.1 computer serial port software in the data package for the computer test software for testing. The serial port software interface is as follows:

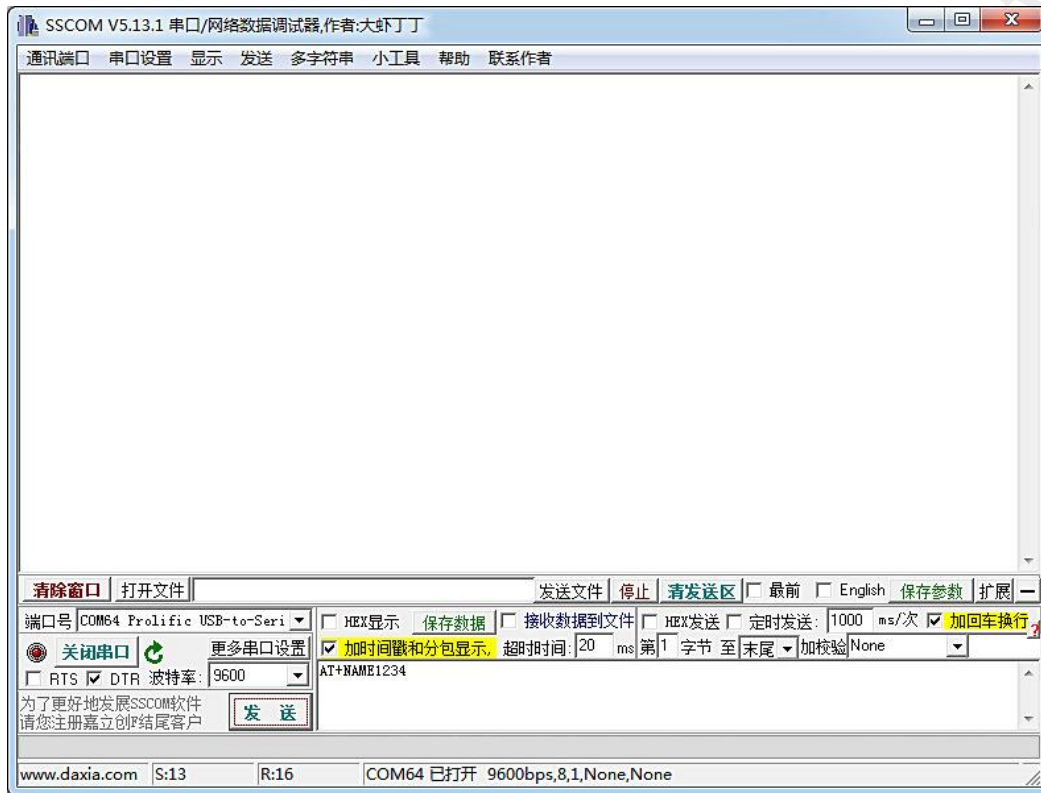


Figure 3 : Computer serial port software diagram

3. Serial Port Usage

3.1. Use Serial Port To Read And Write AT Commands

3.1.1. Module Test Minimal System

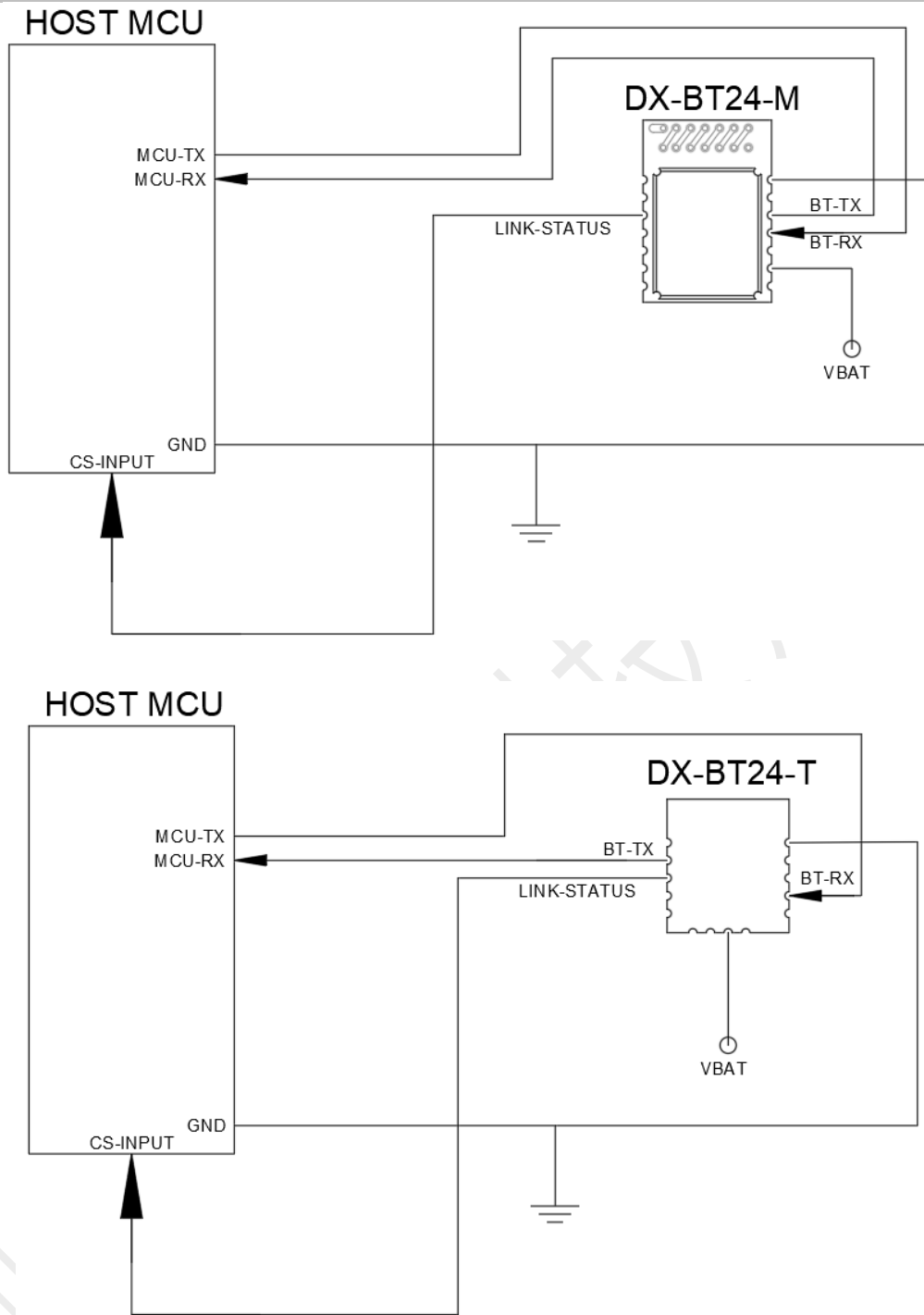


Figure 4 : Module minimum system diagram



3.1.2. The Process Of Reading And Writing AT Commands On The Computer

Install the serial assistant software on the computer, use the USB to TTL serial cable to communicate with the module, refer to "Module Test Minimum System" for wiring, and then send AT commands to query and configure parameters. Note: The power supply of the module is 3.3V.

Example: Change the name of the Bluetooth module to: 1234.

Install the sscom5.13.1 computer serial port software, open the serial port software and select the corresponding COM port, and configure the default parameter configuration of the serial port software installation: 9600bps/8/n/1 (baud rate/data bit/no parity/stop bit), Fill in the corresponding AT+NAME1234 command, and be sure to add a carriage return and line feed (you can directly press the Enter key) or check "Add carriage return and line feed", and then send the command, as shown below:

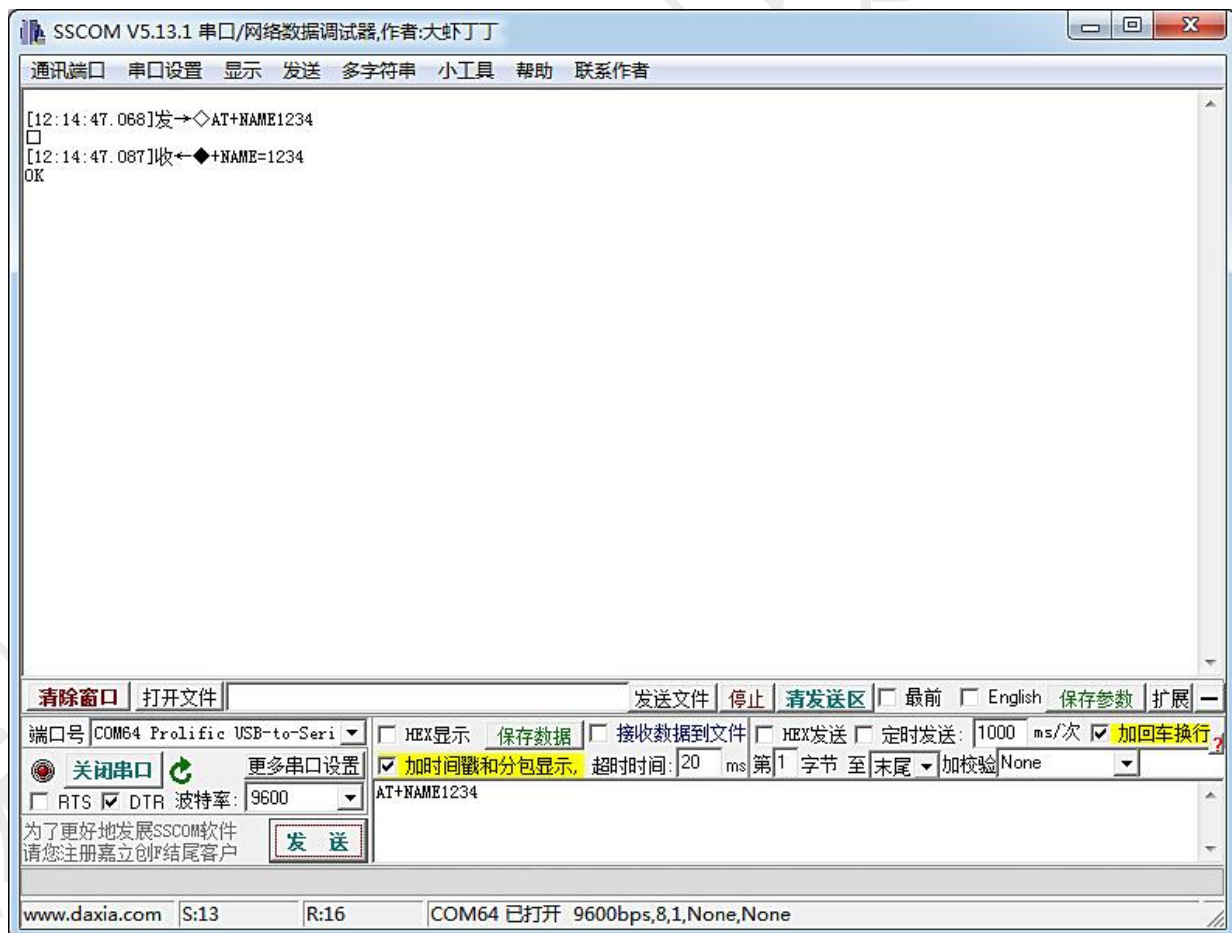


Figure 5 : Demonstration diagram of computer serial port



3.1.3. MCU Read And Write AT Command Process

For the wiring of MCU reading and writing AT commands, please refer to "Module Test Minimum System". For example, modify the Bluetooth name and query the Bluetooth address code. The specific instruction program logic flow refers to the following figure:

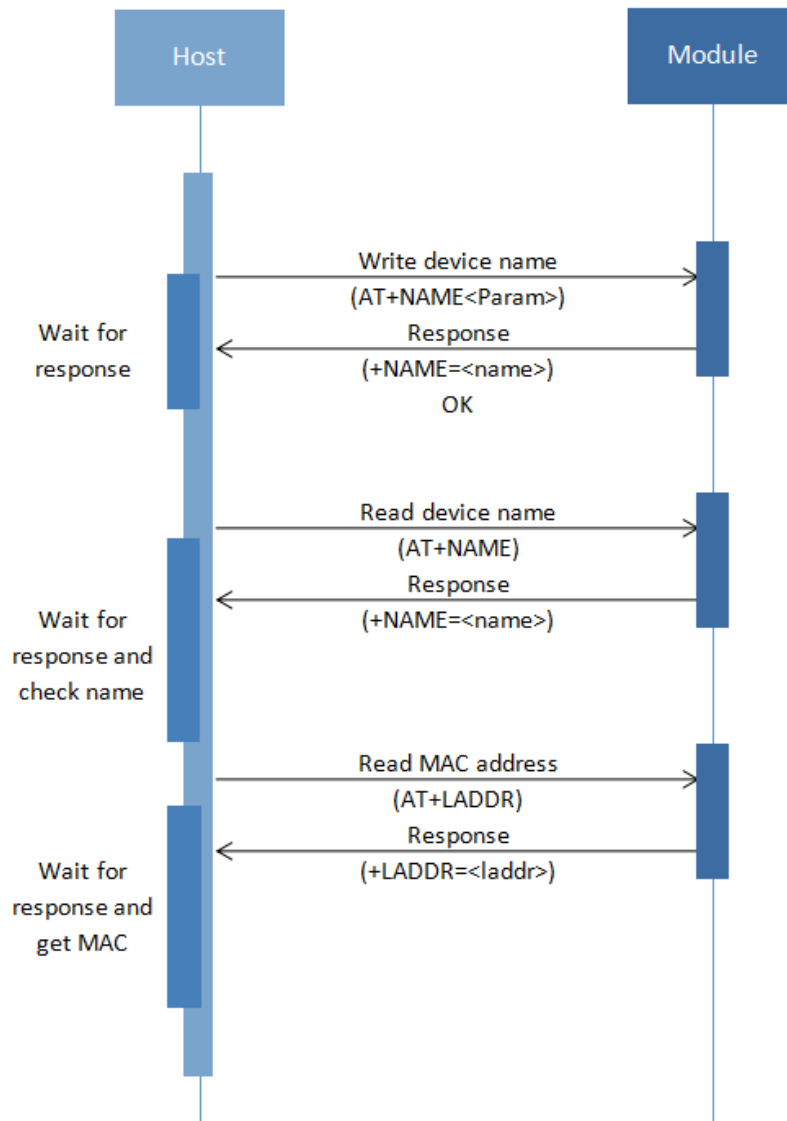


Figure 6 : Read and write AT command logic reference diagram



3.2. Use Serial Communication

3.2.1. Use The PC To Communicate With The Module

Because this module is a BLE serial port protocol, the PC side cannot use the built-in Bluetooth or Bluetooth adapter for connection and communication temporarily. If you need to connect the Bluetooth module, you need to use our main module on the PC side, and use the main module for connection and communication. For the specific process, please refer to "Use the main Bluetooth to communicate with the module" and "DX-BT24 series Bluetooth module_Main mode_Application Guidelines".

3.2.2. Communicate With The Module Using The Mobile Terminal

The MCU communicates with the mobile terminal through the Bluetooth module. The process is as follows:

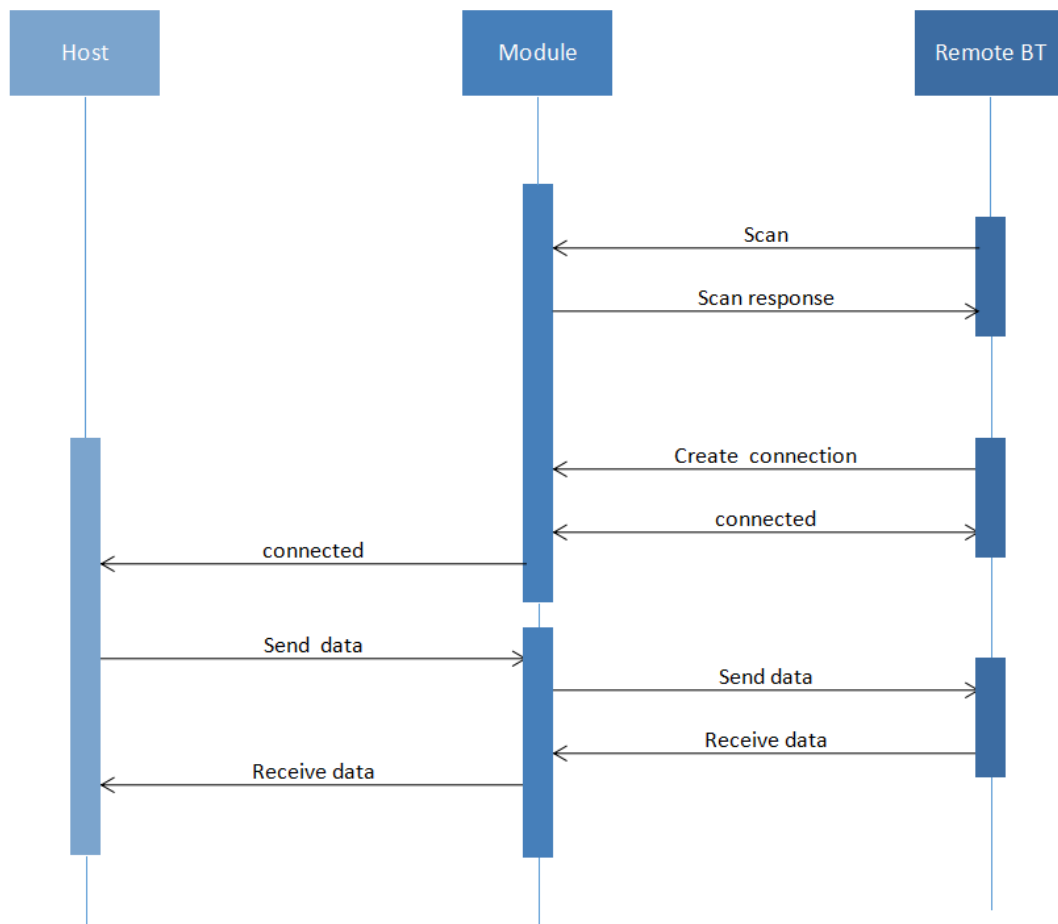




Figure 7 : Module communication flow chart

3.2.3. Communicate With The Module Using Master Bluetooth

The connection between the master module and the slave module needs to use AT commands to connect and communicate. The process is as follows:

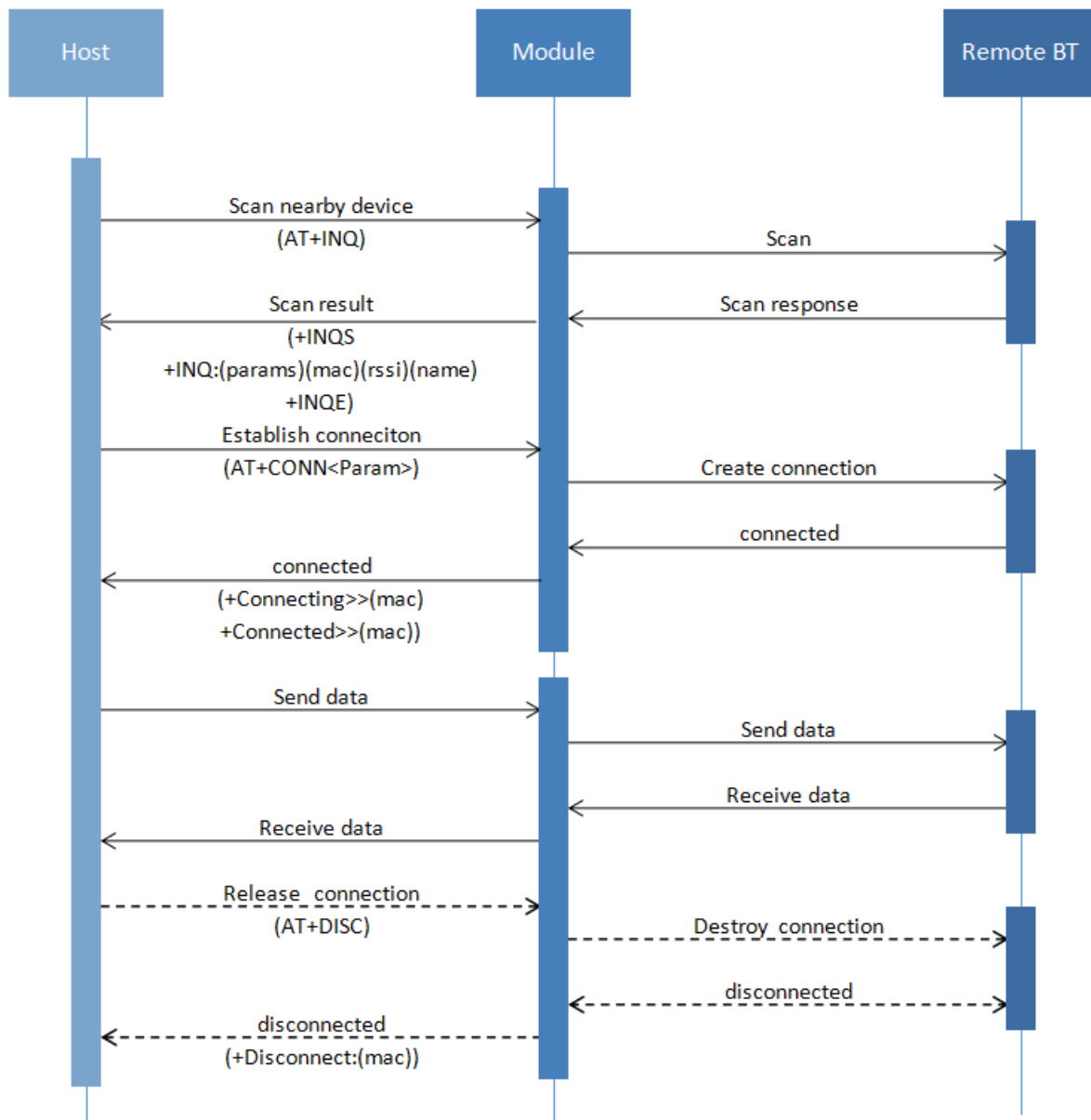


Figure 8 : Master-slave module communication flow chart



4. Detailed Explanation Of Related AT Commands

4.1. Command Format Description

AT+Command<param1 , param2 , param3> <CR><LF>

- All commands start with AT , end with <CR><LF> , In the table showing commands and responses in this document, <CR><LF> is omitted, and only commands and responses are displayed.
- All AT command characters are uppercase.
- <>The content inside is optional , If there are multiple parameters in the command , Separate by comma "," , The angle brackets are not included in the actual command.
- <CR>stands for "carriage return" \r , corresponding hex is 0X0D.
- <LF>stands for "line feed" \n , corresponding hex is 0X0A.
- The command is executed successfully, the corresponding command is returned and ends with OK, and EEROR=<> if it fails , The content of "<>" is the corresponding error code (Please refer to 5.7.)

4.2. Indication Format

+Indication<=param1 , param2 , param3><CR><LF>

- All Indication starts with plus sign "+" , ends with <CR><LF>
- "=" is followed by the indication parameter
- If indication has multiple parameters, parameters must be separated by " , "



4.3. Examples Of AT Commands

Example : Modify the name of the Bluetooth device to 1234

Send : AT+NAME1234

Return : +NAME=1234

OK

5. AT Command

5.1. Basic Commands

5.1.1. Test Command

Function	Command	Response	Description
Test command	AT	OK	Test uart communication

5.1.2. Read Firmware Version

Function	Command	Response	Description
Read version	AT+VERSION	+VERSION= <version>	<version >firmware version According to different modules and customized requirements version will be different

5.1.3. Read MAC Address

Function	Command	Response	Description
Read MAC	AT+LADDR	+LADDR= <laddr>	<laddr>MAC address

address

5.1.4. Read/Write Local Name

Function	Command	Response	Description
Read Bluetooth name	AT+NAME	+NAME= <name>	<name>Bluetooth name The maximum length is 28 bytes Default name : BT24-M/BT24-T

Remark :

If you need to set the bluetooth name, please contact our sales staff for customization.

5.1.5. Query—Serial-port Stop Bit

Function	Command	Response	Description
Query stop bit	AT+STOP	+STOP= <param>	< param>Serial number 0 : 1 stop bit 1 : 2 stop bit Defaults : 0

Remark :

If you need to set the serial port stop bit, please contact our sales staff for customization.

5.1.6. Query—Serial-port Parity Bit

Function	Command	Response	Description
Query parity bit	AT+PARI	+PARI= <param>	< param>Serial number 0 : No Parity 1 : Odd parity 2 : Even parity Defaults : 0

Remark :

If you need to set the serial port check digit, please contact our sales staff for customization.

5.1.7. Query—UART Baudrate

Function	Command	Response	Description
Read Baudrate	AT+BAUD	+BAUD=<baud>	<baud> serial number of Baudrate 1:2400 5: 38400 2:4800 6: 57600 3:9600 7:115200 4: 19200 Defaults : 3 (9600)

Remark :

If you need to set the baud rate, please contact our sales staff for customization.

5.1.8. Set/Query—Software Flow Control

Function	Command	Response	Description
Query flow control status	AT+FLOW	+FLOW=<param1>	< param>Serial number 0 : Turn off flow control 1 : Turn on flow control Defaults : 0
Set flow control status	AT+FLOW<param>	OK	

Remark :

This command is not saved after power-off, and needs to be reset after each power-on.

5.1.9. Set/Query—Transparent Transmission Mode

Function	Command	Response	Description
Query transparent transmission mode	AT+TRANSPORT	+TRANSPORT=<param>	< param>Serial number 0 : Turn off transparent transmission



Set transparent transmission mode	AT+TRANSPORT <param>	+TRANSPORT=<param> OK	1 : Turn on transparent transmission Defaults : 1
-----------------------------------	----------------------	--------------------------	--

Remark :

If the transparent transmission is turned off, the module can continue to respond to AT commands after connecting. If the connection is successful and then send the open transparent transmission command, it will enter the transparent transmission mode and no longer respond to the command. This command is not saved when power off, and needs to be reset after each power on.

5.1.10. Disconnect Bluetooth

Function	Command	Response	Description
Disconnect	AT+DISC		

Remark :

This command can only be used in transparent transmission mode, and can only be sent by the serial port, and is invalid when sent by the mobile phone.

5.1.11. Software Reset

Function	Command	Response	Description
Software Reset	AT+RESET	+RESET OK Power On	

5.2. Broadcast Packet Instruction

5.2.1. Query—SERVICE UUID

Function	Command	Response	Description
Query SERVICE	AT+UUID	+UUID =< param >	< param >SERVICE UUID

UUID

Default service UUID: 0xffe0

Remark :

If you need to set SERVICE UUID or 128-bit UUID, please contact our sales staff for customization.

5.2.2. Query—NOTIFY UUID\WRITE UUID

Function	Command	Response	Description
Query module notify\write UUID	AT+CHAR	+CHAR= <param>	<param>Notify\Write Parameters Defaults : 0xffe1 This channel is a readable and writable channel

Remark :

If you need to set NOTIFY UUID\WRITE UUID, please contact our sales staff for customization.

5.2.3. Query—WRITE UUID

Function	Command	Response	Description
Query module writes UUID	AT+WRITE	+WRITE= <param>	<param>Write UUID Defaults : 0xffe2

Remark :

If you need to set WRITE UUID, please contact our sales staff for customization.

5.2.4. Modify The 28-byte Content In The Broadcast Packet

Function	Command	Response	Description
Query broadcast packet parameters	AT+TEADV	+TEADV= <param>	This instruction is the 28-byte broadcast packet data after modifying 020106
Set broadcast packet parameters	AT+TEADV<param>	OK	

The specific format of the broadcast is as follows :

1、Common broadcast packet format : Effective data length + data type + data

Example : 1BFF0102030405060708090102030405060708090102030405060708

2、IBeacon broadcast packet format :

1A(length , Fixed value)+FF(type of data) +4C00(Company ID)+02(iBeacon)+15 (iBeacon length , It is a fixed value) +UUID(16 bytes)+major(2 bytes)+mainor(2 bytes)+ measured power(When 1 meter, the scanned rssi value);

Example : 1AFF4C000215FDA50693A4E24FB1AFCFC6EB076478251527C04CC5

Remark :

The content of the broadcast packet is a hexadecimal number, and the 020106 broadcast packet header is the default setting. This command can only modify the last 28 bytes of the entire broadcast packet.(If you use this command to set the broadcast packet format incorrectly, Bluetooth will not be able to broadcast, and you need to clear the broadcast parameters or modify the format to the correct broadcast packet format). This command is not saved after power-off, and needs to be reset after each power-on.

Example :

Write the content of the module broadcast package as :

1BFF0102030405060708090A0B0C0D0E0F101112131415161718191A

Send : AT+TEADV1BFF0102030405060708090A0B0C0D0E0F101112131415161718191A

Return : OK

5.2.5. Modify The 7-byte Content In The Broadcast Packet

Function	Command	Response	Description
Query broadcast package content	AT+SEADV	+ SEADV= <param>	
Set broadcast package content	AT+SEADV<param>	OK	

Remark :

Using this command, you can modify the 7-byte data in the broadcast packet at will. If the number of bytes is not enough, it will automatically fill with zeros after adding data. The red part in the broadcast packet is 7 bytes of data

(0302ffe0319000816**11223344556677**09ff584448872d62334a) , This command is not saved after power-off, and needs to be reset after each power-on.

Application : You can use this command to write data in the broadcast, and use the master device to parse the data, then data transmission can be carried out.

Example :

Modify the content of 7 bytes in the broadcast packet as : aabbccddeeff

Send : AT+SEADVaabbccddeeff

Return : OK

That is, the content of the broadcast packet is :

0302ffe0319000816**aabbccddeeff**0009ff584448872d62334a

5.3. Safety Control Instructions

5.3.1. Set/Query—Open Private Cryptographic Protocol

Function	Command	Response	Description
Query password switch	AT+OPASS	+OPASS= <param>	<param>Serial number Turn off : 0
Set password switch	AT+OPASS<param>	OK	Turn on : 1 Defaults : 0

Remark :

When this command is set to open, after the module is connected, the main device needs to enter the corresponding private password within 7 seconds, otherwise the module will automatically disconnect after 7 seconds. If the correct private password is entered within 7 seconds after connection, the module will Return succeed, if the password is incorrectly entered, Return error=103 (Note: APP can receive the module response value, provided that NOTIFY is turned on)

This command is not saved after power-off, and needs to be reset after each power-on.

5.3.2. Query—Private Password

Function	Command	Response	Description
Query private password	AT+APASS	+APASS=<param>	<param> Password can only be four decimal digits Defaults : 0000

Remark :

If you need to set a private password, please contact our sales staff for customization.

5.3.3. Set/Query—Add Whitelist

Function	Command	Response	Description
Query whitelist	AT+WHITELIST	+WHITELIST=<num>,<type>,<mac>	<num> : The number of address digits to be added, up to 5 <type> : address type <mac> : mac address Defaults : 0,0,NULL
Set whitelist	AT+WHITELIST<num>,<type>,<mac>	OK	

Remark :

Address type: 0: public, 1: random (Note: different main device address types are different, you need to switch 0 or 1 to verify, the phone address type is generally random, that is, 1).

After this command is set, it can only be connected by the master device with the address code in the whitelist. If you want to clear the setting content, you need to use the AT+CLEARLIST command.

This command cannot be used with AT+AUTOLIST, AT+ADVMODE at the same time.

This command is not saved after power-off, and needs to be reset after each power-on.

Example :

Set the whitelist address code as: master device a address: 001122334400, master device b address: 001122334411, master device c address: 001122334422, master device d address: 001122334433, master device e address: 001122334444.

Send :

AT+WHITELIST5,0,001122334400,001122334411,001122334422,001122334433,001122334444



Return : OK

5.3.4. Set/Query—Automatically Add Whitelist

Function	Command	Response	Description
Query whitelist	AT+AUTOLIST	+AUTOLIST= <param>,<type> ,<mac>	<param>:Serial number <type> : address type <mac> : mac address <switch> : switch
Set whitelist	AT+AUTOLIST<switch>,< num>	OK	Turn off : 0 Turn on : 1 <num> : Number Defaults : 0,0,NULL

Remark :

Address type: 0: public, 1: random (Note: different main device address types are different, you need to switch 0 or 1 to verify, the phone address type is generally random, that is, 1). <num> is the number of whitelists that can be remembered, and the maximum value is 5.

After this setting is turned on, it can automatically remember the MAC address code of the main device that initially started to connect and set it as a whitelist. The module only allows the main device that is set to the whitelist to connect, and other main devices cannot connect to the module. If you need to add a new whitelist, you need to use the AT+CLEARLIST command to clear the memory. To close this command, please send AT+AUTOLIST0.

This command cannot be used simultaneously with AT+DIRADV, AT+WHITELIST, AT+ADVMODE. This command is not saved after power-off, and needs to be reset after each power-on.

Example :

Set to open the automatic white list, and the single number of memorable white names is 3.

Send : AT+AUTOLIST1,3

Return : OK

5.3.5. Set/Query—Clear Whitelist

Function	Command	Response	Description
----------	---------	----------	-------------



Clear whitelist AT+CLEARLIST

Remark :

You need to clear the whitelist every time you add the whitelist.

5.4. Connect Instruction

5.4.1. Set/Query—Notify The Upper Computer Connection Status

Function	Command	Response	Description
Query parameter	AT+NOTI	+NOTI=<param>	< param>Serial number 0 : No notice
Set parameter	AT+NOTI<param>	+NOTI=<param> OK	1 : notify Defaults : 0

Remark :

After turning on the notification of the host computer connection status , After the module is connected, return OK+CONN0x79AF13557E35(The red part is the main device address)
This command is not saved after power-off, and needs to be reset after each power-on.

5.4.2. Set/Query—Whether The Module Can Be Connected

Function	Command	Response	Description
Query parameter	AT+ADVMODE	+ADVMODE=<param>	<param> : Parameter value
Set parameter	AT+ADVMODE<param>	OK	0 : Module cannot be connected 1 : Module can be connected

Remark :

After the status configuration is successful, return OK and restart. If the status is set repeatedly, it will not restart after returning to OK.

This command cannot be used simultaneously with AT+ WHITELIST, AT+ AUTOLIST.
This command is not saved after power-off, and needs to be reset after each power-on.

5.5. Power consumption instruction

5.5.1. Set/Query—Energy Saving Mode

Function	Command	Response	Description
Query Energy saving mode	AT+PWRM	+PWRM= <param>	<param>(0、1、2) 0 : Low power mode
Set Energy saving mode	AT+PWRM<param>	+PWRM= <param> OK	1 : Normal working mode 2 : Hibernation mode Defaults : 1

Remark :

This command is not saved after power-off, and needs to be reset after each power-on.

5.5.2. Set/Query—Whether To Turn Off The Broadcast

Function	Command	Response	Description
Query broadcast status	AT+CLOSEADV	+CLOSADV= <param>	<param> Serial number 0 : Turn off broadcast
Set broadcast status	AT+CLOSEADV<param>	OK	1 : Turn on broadcast Default Turn on : 1

Remark :

This instruction can be used to reduce power consumption.

This command is not saved after power-off, and needs to be reset after each power-on.

5.6. Pairing Mode

5.6.1. Set/Query—Enter Pairing Mode

Function	Command	Response	Description
Query pairing mode	AT+SEADV	+SEADV= <param>	<param>broadcast packet Not entering pairing mode broadcast packet : 0302e0ff0319000009ff5844202 105211ad8
Set pairing mode	AT+SEADV534d4152542d00	OK Power On	Enter pairing mode to broadcast packets : 0302ffe0319000816534d41525 42d0009ff5844202105211ad8 Defaults : 0302e0ff0319000009ff5844202 105211ad8

Remark :

- 1、 To exit the pairing mode, you can send AT+ CLEARADV to clear the contents of the broadcast packet.
- 2、 If there are multiple slave modules, it is recommended to press and hold the button to enter the pairing mode, because after multiple modules are set to enter the pairing mode at the same time, the master module will not be able to find the corresponding module, and the meaning of the pairing mode will be lost.
- 3、 This command is not saved after power-off, and needs to be reset after each power-on.

5.7. List Of Error Codes

The detailed information of the error code in ERROR=<> is listed as follows :

Return Value	Error Message
101	Parameter length error
102	Parameter format error
103	Abnormal parameter data
104	Command error



6. Value-added Services

In order to meet the various functional requirements of customers, our company can provide the following technical value-added services:

- Module program customization, such as: IO function port customization, AT command customization, broadcast package customization, etc.
- Module PCB hardware customization, Can be customized to customer's hardware requirements.
- Various Bluetooth solutions can be customized, and a complete set of Bluetooth software and hardware solutions can be customized according to customer needs.
- A complete set of networking solutions can be customized, and a complete set of networkable and gateway solutions can be customized according to customer needs.

If you have the above customization requirements, please contact our sales staff directly.